



**ፓዮኒር ዳይግኖስቲክ ሴንተር**  
**Pioneer Diagnostic Center**

**HELPING DOCTORS HELP PATIENTS**

## **COMPANY PROFILE**

**Revised Edition, 2020**

---

## **COMPANY BACKGROUND**

---

Pioneer Diagnostic Center is the first diagnostic center in Ethiopia to introduced both MRI (1.5 *Tesla*) and **CT-Scan**. We are an organization that continuously strives to improve the quality of service. We deliver to patients and through them to our referring physicians.

The weekly lectures and case discussions that are held between our radiologists and our technologists, the performance and quality monitoring mechanisms we have put in place in collaboration with staff at Harvard Medical School are just a few of the things we have put in place to increase the capacity of our staff and consequently to improve and maintain the quality of our images and reports.

In addition, to our effort to improve and maintain the quality of image and report produced at our center, we also pay attention to the comfort and satisfaction of our patients. It is, for this reason, we design our reception area to resemble home as opposed to a medical facility and we have been serving tea and coffee to our patients. This ‘cutting age’ concept is new not only to Ethiopia but also to medical facilities in most developed countries. We have now raised the trend analysis even higher by improving and renovating our reception area and by providing free internet service for our patients and their families while they wait for the scan facility.

Hand in hand, with our commitment to excellence we have also been doing our level best to our services that is affordable as possible to those with limited or no income. The 50% discount for those who cannot afford is just one example of the initiatives we have to make our services affordable for those with low-income families.

---

## **MISSION, VISION AND CORE VALUES**

---

### **Our Mission**

Providing the best service & quality for our customers on medical imaging diagnosis using the latest medical equipment.



### **Our Vision**

To be well known from East Africa by Imaging Diagnostic services and increasing the quality of Medical Imaging Diagnosis to maintain customer Satisfaction.

### **Core Values**

- Customer Satisfaction
- Confidentiality
- Honesty
- Loyalty
- Integrity



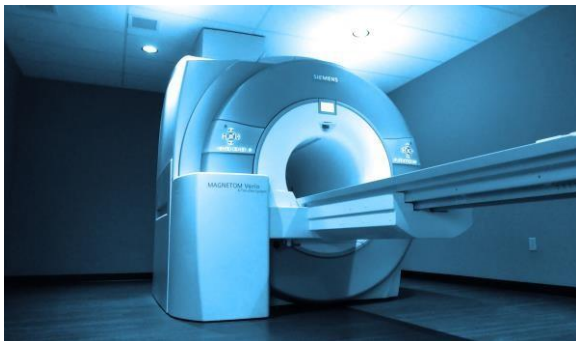
---

## MAJOR SERVICES

---

### CT-SCAN

Computed Tomography (CT), also known as Computed Axial Tomography (CAT), is a painless, sophisticated x-ray procedure. Multiple images are taken during a CT or CAT scan, and a computer compiles them into complete, cross-sectional pictures (16 Slices) of soft tissue, bone and blood vessels.



### MRI

Magnetic Resonance Imaging (MRI) is a noninvasive, usually painless medical test that helps physicians diagnose and treat medical conditions. (0.3 Tesla and 1.5 Tesla).

### DIGITAL X-RAY

A form of electromagnetic radiation with very high frequency and energy. X-Rays lie between ultraviolet radiation and gamma radiation on the electromagnetic spectrum.



### ULTRASOUND

Ultrasound is a procedure that uses high-frequency sound waves to view internal organs and produce images of the human body. The human ear cannot hear the sound waves used in an ultrasound. One of the most common uses for ultrasound is to view the uterus (the muscular organ in a woman's abdomen that holds the fetus) and fetus (unborn child) during pregnancy (3D).

## MAMMOGRAPHY

A mammogram is an x-ray picture of the breast. It can be used to check for breast cancer<sup>5</sup> in women who have no signs or symptoms of the disease. It can also be used if you have a lump or other sign of breast cancer.



---

### ***OUR SPECIAL ACTIVITIES***

---

- The only diagnostic Center using the PACS (Picture Archive Communication System).
- Quality control is done by radiologists at HARVARD Medical School
- Weekly training for Technologists.
- Superior imaging and reporting techniques
- Using the PACS system and report will be generated by Sub-Specialized Doctors.
- We have musculoskeletal, Neuro, body and cardio thoracic sub specialized radiologists
- The only diagnostic Center with high tesla MRI, CT-SCAN, Digital X-Ray, Ultrasound and Mammography all in one Place.
- Excellent Reception Area and Friendly Staff.
- 24/7 service.
- High-Speed Internet for patients during their stay.
- Good location with enough parking spaces.



---

## ***OUR CONTACT***

---

**Branch 1 & Head Office:** Bole Road, Alem Building  
Africa Avenue, Behind Alem Cinema  
Addis Ababa, Ethiopia.

**Branch 2:** Gotera Condominium  
Inside Hallelujah General Hospital  
Addis Ababa, Ethiopia

**Branch 3:** Around Black lion hospital  
Inside Radio Fana compound  
Addis Ababa, Ethiopia

**Telephone:** +251-116-183335/36  
+251-908-646464

**E-Mail:** [hanan.tadele@pdc-et.com](mailto:hanan.tadele@pdc-et.com)  
: [info@pdc-et.com](mailto:info@pdc-et.com)

**Website:** [www.pdc-et.com](http://www.pdc-et.com)